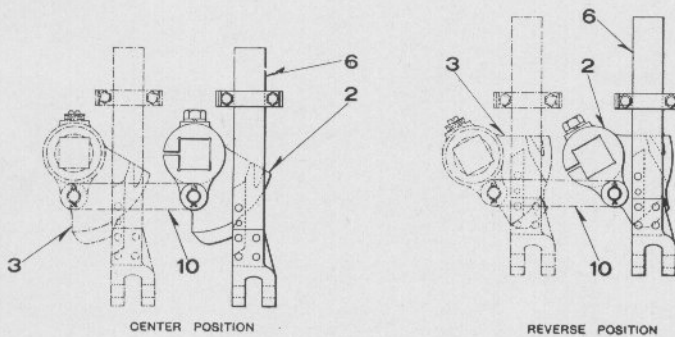
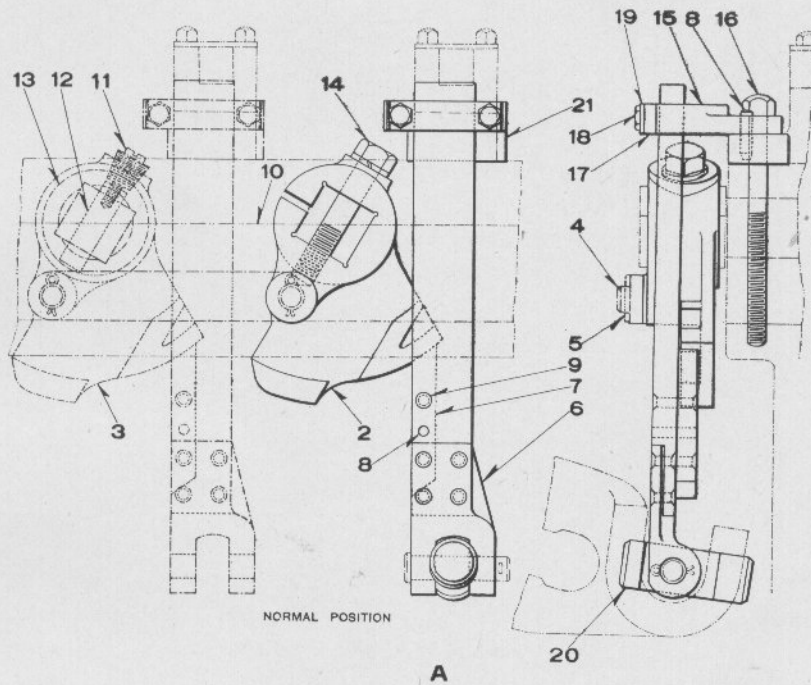


PLATE A-1050

UNION SWITCH & SIGNAL CO.



CAM LOCK

UNION SWITCH & SIGNAL CO.

STYLE "S-8" ELECTRO-MECHANICAL INTERLOCKING
MACHINE DETAIL PARTS

CAM LOCKS

This Plate shows relative positions of Cams and Lock Bars when both Electric and Mechanical Levers are in Normal, Half Reversed and Reversed Positions
For further information refer to description in the front of This Catalog

Order by Plate, Piece, Reference and Abbreviated Description Given in
Heavy Face Type Only

Piece	Ref.	Description	Drawing Reference
137581	A	Bolt Lock, complete, as shown in full lines for locking a Single Mechanical Lever, used with Detector and Indicating Lever.....	C-8875-1
137582	Aa	Bolt Lock, complete, as shown in full and dot and dash lines for Locking two adjacent Mechanical Levers, used with Detector and Indicating Lever.....	C-8875-1
	Ab	Bolt Lock, complete for Locking two Mechanical Levers not adjacent. (Specify length of Connecting Link), used with Detector and Indicating Lever).	
	Ac	Bolt Lock, complete for locking three adjacent Mechanical Levers, used with Detector and Indicating Levers.....	C-8875-1
67085	2	Locking Cam for Ref. A.....	C-8875-2
110717	2a	Locking Cam, complete, with Stud Ref. 4, Washer Ref. 5, and $\frac{1}{8}$ "x $\frac{3}{4}$ " Cotter for two adjacent levers..	C-8875-2
110718	3	Locking Cam complete, with Stud Ref. 4, Washer Ref. 5 and $\frac{1}{8}$ "x $\frac{3}{4}$ " Cotter for Refs. Aa, Ab and Ac.....	C-8875-3
67050	4	Stud, $\frac{1}{2}$ "x2 $\frac{5}{8}$ " with Washer Ref. 5 and $\frac{1}{8}$ "x $\frac{3}{4}$ " Cotter for Refs. 2a and 3.....	8115-178
7309	5	Washer for Refs. 2a, 3 and 4.....	7826-12
67088	6	Lock Bar, complete (No Dog).....	C-8875-2
67091	7	Lock Dog.....	C-8875-2
2356	8	Dowel Pin for Ref. 7.....	B-8063-1
56380	9	Rivet, $\frac{1}{4}$ "x1 $\frac{1}{16}$ " for Ref. 7.....	B-9965-1

PLATE A-1050

UNION SWITCH & SIGNAL CO.

STYLE "S-8" ELECTRO-MECHANICAL INTERLOCKING MACHINE DETAIL PARTS

(Continued)

CAM LOCKS

This Plate shows relative positions of Cams and Lock Bars when both Electric and Mechanical Levers are in Normal, Half Reversed and Reversed Positions

For further information refer to description in the front of This Catalog

Order by Plate, Piece, Reference and Abbreviated Description Given in
Heavy Face Type Only

Piece	Ref.	Description	Drawing Reference
67092	10	Link, 1-Way.....	C-8875-2
119528	10a	Link, 2-Way.....	C-8875-3
	10b	Link (more than 2-Way, Specify Length).....	C-8875-2
89835	11	Plug.....	9511-73
67054	12	Pin for Refs. Aa, Ba and Ca.....	8058-204
67118	13	Journal for Refs. Aa, Ba and Ca.....	8093-92
	14	Bolt, $\frac{1}{2}$ "x $2\frac{1}{2}$ " Hex. Hd. with $\frac{1}{2}$ " plain lock washer ($\frac{3}{16}$ "x $\frac{3}{32}$ ").	
67089	15	Lock Bar Guide with one hole and hole for Dowel Pin 8 used on rails having one piece caps, except at joint. (Locking Brackets drilled like Fig. 15, Plate A-2)...	C-8875-2
67090	15a	Lock Bar Guide with two holes used on rails having 1-Way Caps and at Joint of one piece Caps. (Lock- ing Brackets drilled like Fig. 16, Plate A-2).....	C-8875-2
	16	Cap Screw, $\frac{3}{8}$ "x $4\frac{3}{4}$ " Hex. Hd. (Used for Joint Brackets).	
	16a	Cap Screw, $\frac{3}{8}$ "x $2\frac{3}{4}$ " Hex. Hd. (Used for intermediate brackets).	
67093	17	Guide Strip.....	C-8875-2
120932	18	Screw for attaching Ref. 17 to Ref. 15 or Ref. 15a...	8098-1083
120933	19	Bolt Lock for Ref. 18.....	8486-343
124443	20	Pin, 1"x $2\frac{5}{8}$ ".....	8066-90
110912	21	Filler Block. (Used under Lock Bar Guides, Refs. 15 and 15a when Locking Bracket is omitted).....	C-8577-92